

Global - Round Trial 2011 - 1

Inter-Instrument Averages, Inter-Instrument Variations, Typical within-instrument Variations

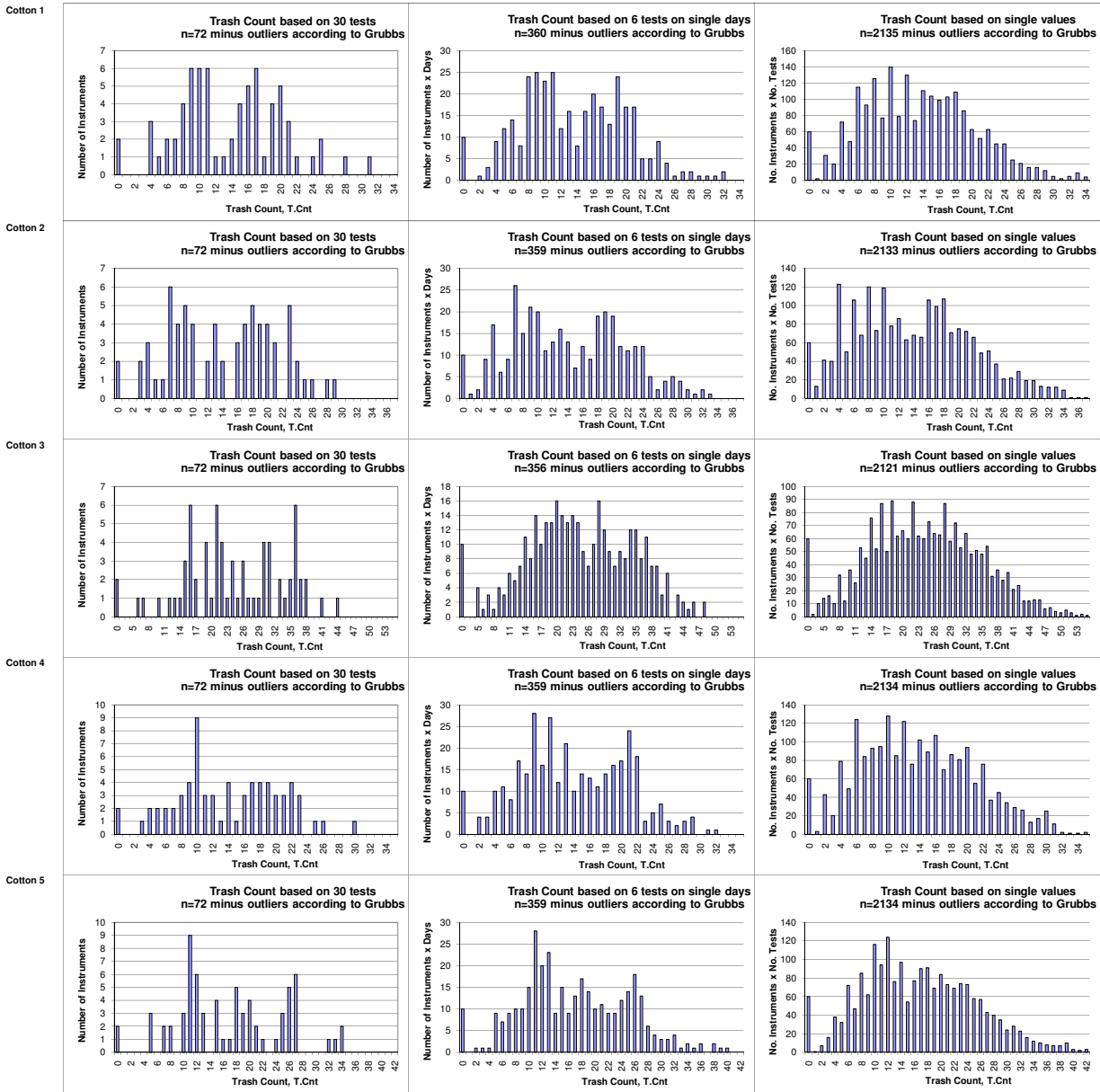
Trash Count								
			Cotton 1	Cotton 2	Cotton 3	Cotton 4	Average	Cotton 5
Average of Instruments (Grubbs)			13.694	14.077	24.253	13.921		17.052
Number Of Instruments			72	72	72	72	72	72
Inter-Instrument Variation	based on 30 tests	SD	6.416	7.147	9.661	6.558	7.445	8.031
		CV %	46.9	50.8	39.8	47.1	46.1	47.1
	based on 6 tests	SD	6.490	7.465	10.075	6.827	7.714	8.111
		CV %	47.4	53.0	41.5	49.0	47.8	47.6
	based on single tests	SD	6.834	7.858	10.650	7.212	8.138	8.465
		CV %	49.9	55.8	43.9	51.8	50.4	49.6
Typical within-instrument Variation (Median)	between different days with each 6 tests	SD	1.721	1.831	2.417	1.629	1.900	1.738
		CV %	12.6	13.0	10.0	11.7	11.8	10.2
	between single tests on one day	SD	2.430	2.222	3.610	2.434	2.674	2.811
		CV %	17.7	15.8	14.9	17.5	16.5	16.5
	between all tests on different days	SD	3.087	3.352	4.726	3.189	3.588	3.421
		CV %	22.5	23.8	19.5	22.9	22.2	20.1

Trash Area								
			Cotton 1	Cotton 2	Cotton 3	Cotton 4	Average	Cotton 5
Average of Instruments (Grubbs)			0.173	0.143	0.315	0.149		0.199
Number Of Instruments			72	72	72	72	72	72
Inter-Instrument Variation	based on 30 tests	SD	0.054	0.044	0.083	0.038	0.055	0.059
		CV %	31.5	30.7	26.3	25.5	28.5	29.4
	based on 6 tests	SD	0.056	0.046	0.097	0.045	0.061	0.063
		CV %	32.1	32.2	30.6	29.9	31.2	31.8
	based on single tests	SD	0.065	0.055	0.117	0.056	0.073	0.077
		CV %	37.9	38.4	37.0	37.3	37.6	38.5
Typical within-instrument Variation (Median)	between different days with each 6 tests	SD	0.033	0.028	0.051	0.026	0.035	0.032
		CV %	19.1	19.7	16.3	17.1	18.0	16.3
	between single tests on one day	SD	0.049	0.030	0.077	0.033	0.047	0.1
		CV %	28.3	21.2	24.3	22.4	24.1	26.7
	between all tests on different days	SD	0.065	0.046	0.093	0.048	0.063	0.065
		CV %	37.8	31.9	29.5	32.5	32.9	32.5

Maturity								
			Cotton 1	Cotton 2	Cotton 3	Cotton 4	Average	Cotton 5
Average of Instruments (Grubbs)			85.8501	85.5791	85.4243	85.8891		84.9952
Number Of Instruments			67	67	67	67	67	67
Inter-Instrument Variation	based on 30 tests	SD	2.6786	3.6679	2.5263	2.4705	2.8358	2.5672
		CV %	3.1	4.3	3.0	2.9	3.3	3.0
	based on 6 tests	SD	2.6284	3.7131	2.5458	2.5480	2.8588	2.4863
		CV %	3.1	4.3	3.0	3.0	3.3	2.9
	based on single tests	SD	2.6752	3.8108	2.6037	2.4980	2.8969	2.4949
		CV %	3.1	4.5	3.0	2.9	3.4	2.9
Typical within-instrument Variation (Median)	between different days with each 6 tests	SD	0.2739	0.2458	0.2981	0.2981	0.2790	0.2635
		CV %	0.3	0.3	0.3	0.3	0.3	0.3
	between single tests on one day	SD	0.3161	0.3761	0.3761	0.3545	0.3557	0.3699
		CV %	0.4	0.4	0.4	0.4	0.4	0.4
	between all tests on different days	SD	0.4795	0.4983	0.4983	0.4686	0.4861	0.4901
		CV %	0.6	0.6	0.6	0.5	0.6	0.6

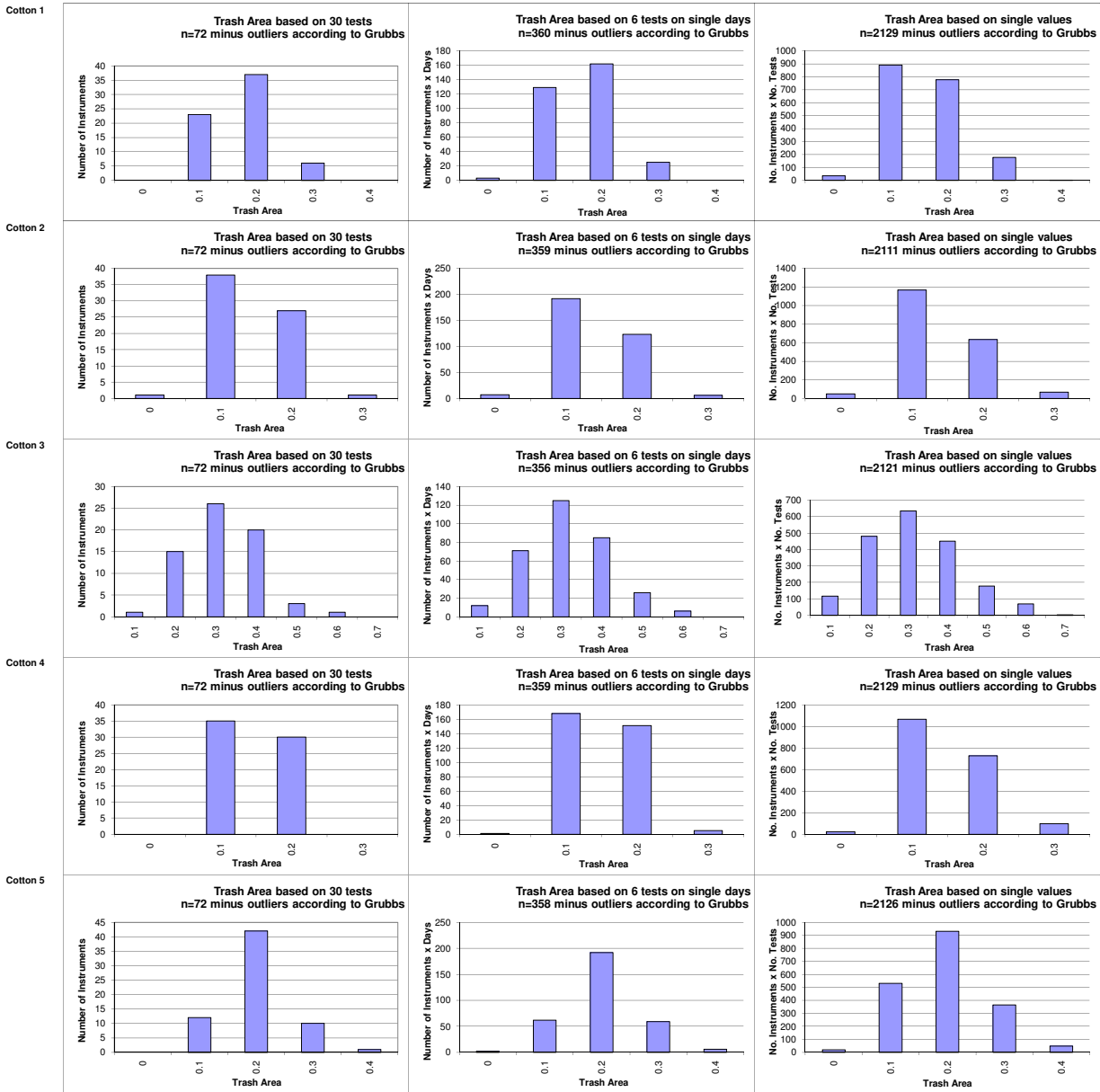
SFI								
			Cotton 1	Cotton 2	Cotton 3	Cotton 4	Average	Cotton 5
Average of Instruments (Grubbs)			9.939	7.035	8.509	6.640		8.265
Number Of Instruments			77	77	77	77	77	77
Inter-Instrument Variation	based on 30 tests	SD	1.860	1.445	1.520	1.485	1.577	1.570
		CV %	18.7	20.5	17.9	22.4	19.9	19.0
	based on 6 tests	SD	1.788	1.457	1.364	1.485	1.523	1.539
		CV %	18.0	20.7	16.0	22.4	19.3	18.6
	based on single tests	SD	1.837	1.437	1.419	1.462	1.539	1.606
		CV %	18.5	20.4	16.7	22.0	19.4	19.4
Typical within-instrument Variation (Median)	between different days with each 6 tests	SD	0.291	0.208	0.287	0.210	0.249	0.242
		CV %	2.9	3.0	3.4	3.2	3.1	2.9
	between single tests on one day	SD	0.551	0.335	0.488	0.294	0.417	0.441
		CV %	5.5	4.8	5.7	4.4	5.1	5.3
	between all tests on different days	SD	0.638	0.406	0.559	0.356	0.490	0.493
		CV %	6.4	5.8	6.6	5.4	6.0	6.0

Test Result Distributions
Trash Count



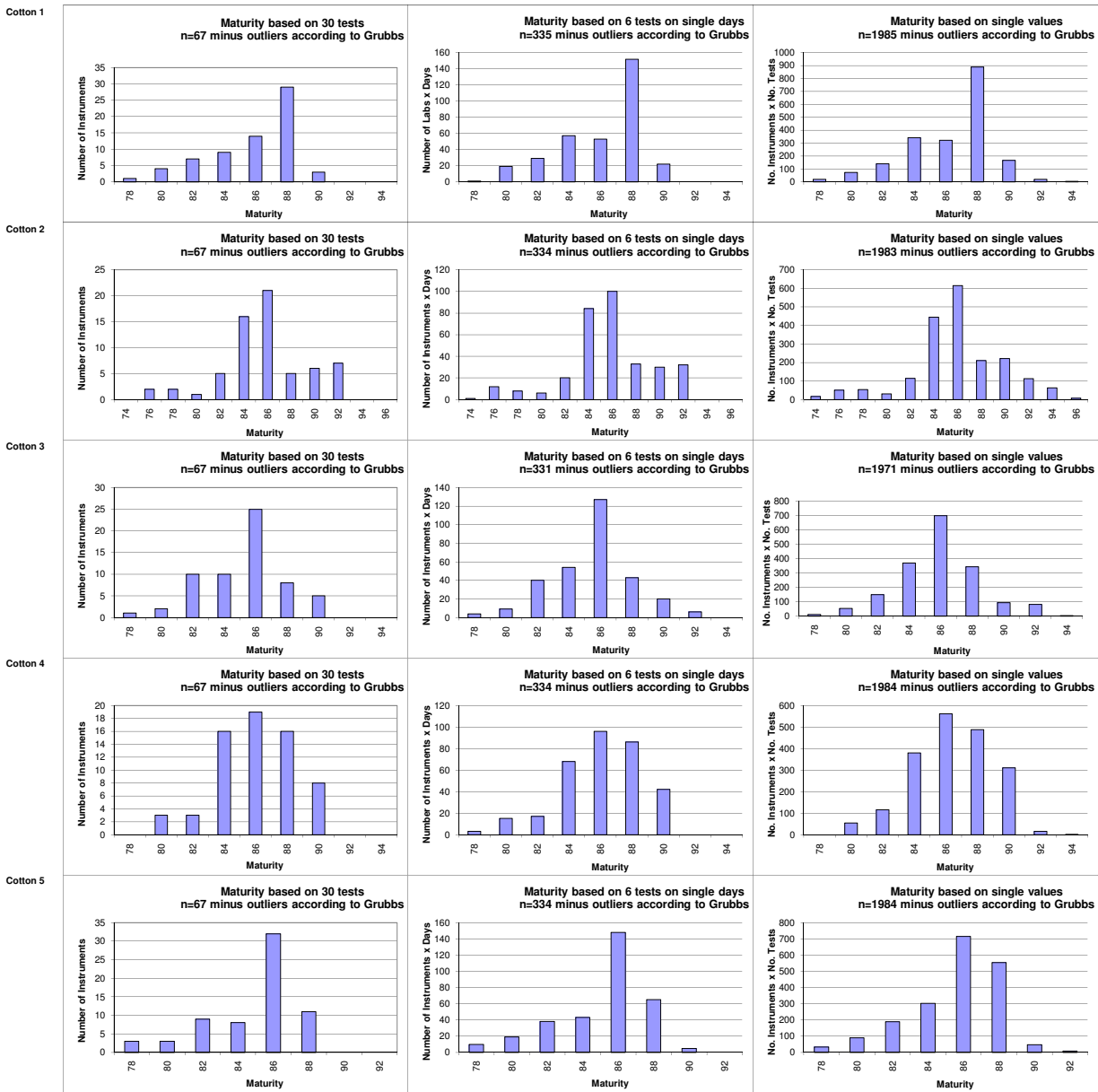
(Only results from instruments/days/single tests that are not regarded as outliers according to Grubbs' method.)
(classes are defined as > lower limit and <= upper limit)

Test Result Distributions
Trash Area



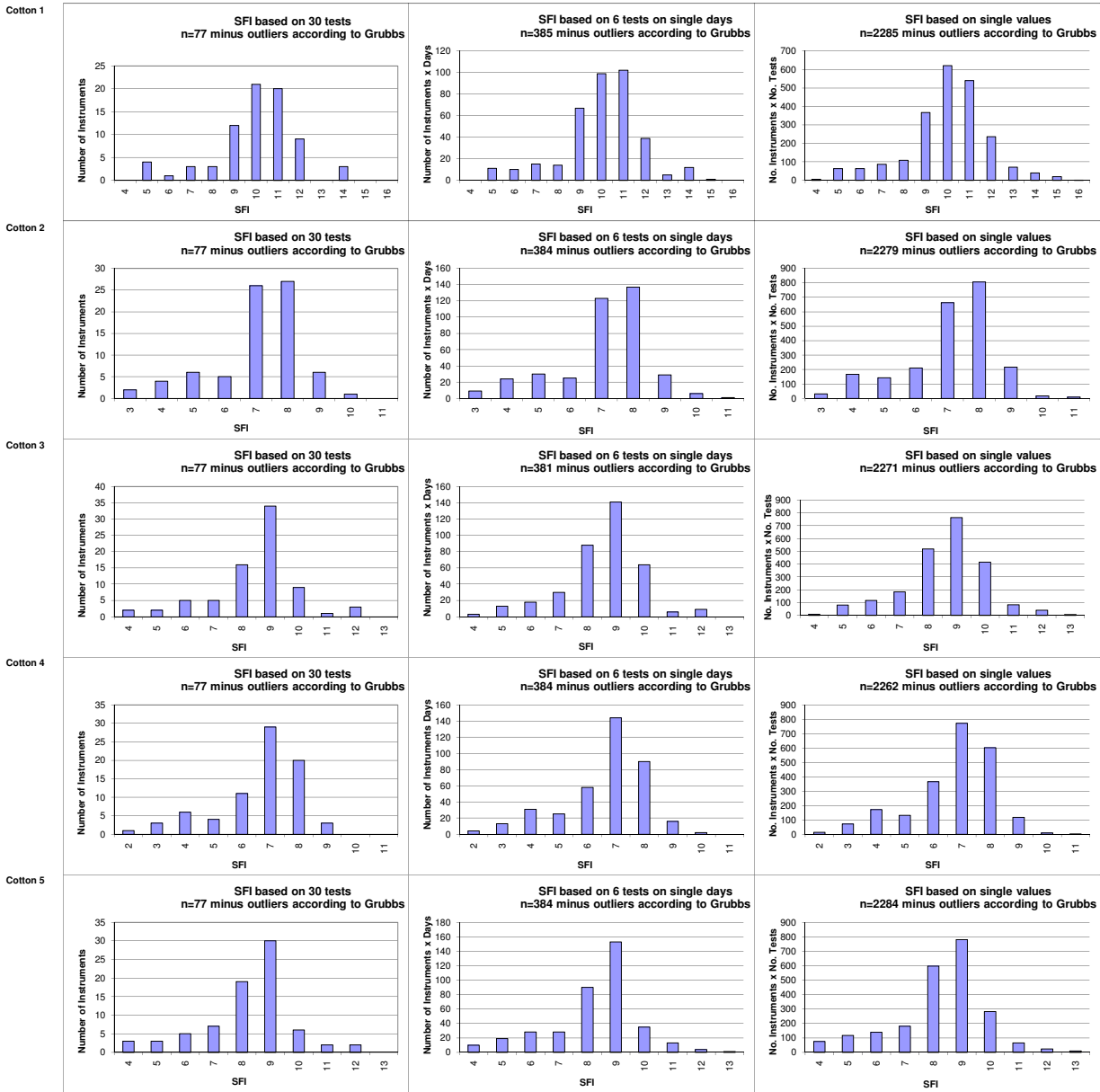
(Only results from instruments/days/single tests that are not regarded as outliers according to Grubbs' method)
(classes are defined as > lower limit and <= upper limit)

Test Result Distributions
Maturity



(Only results from instruments/days/single tests that are not regarded as outliers according to Grubbs' method)

Test Result Distributions
SFI



(Only results from instruments/days/single tests that are not regarded as outliers according to Grubbs' method)
(classes are defined as > lower limit and <= upper limit)