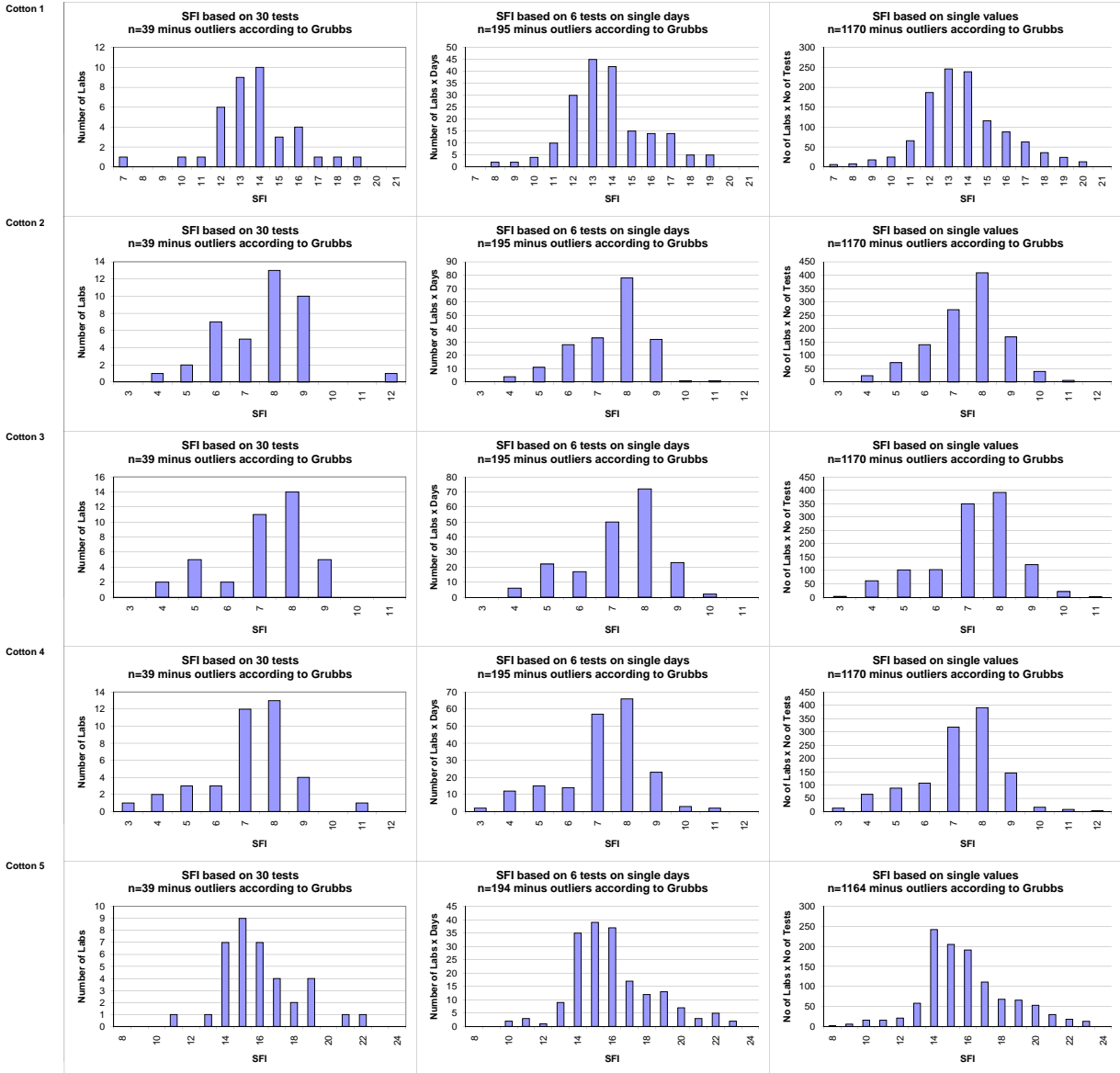


CSITC Round Trial GL 2009-4

Inter-Laboratory Averages, Inter-Laboratory Variations, Typical In-Laboratory Variations

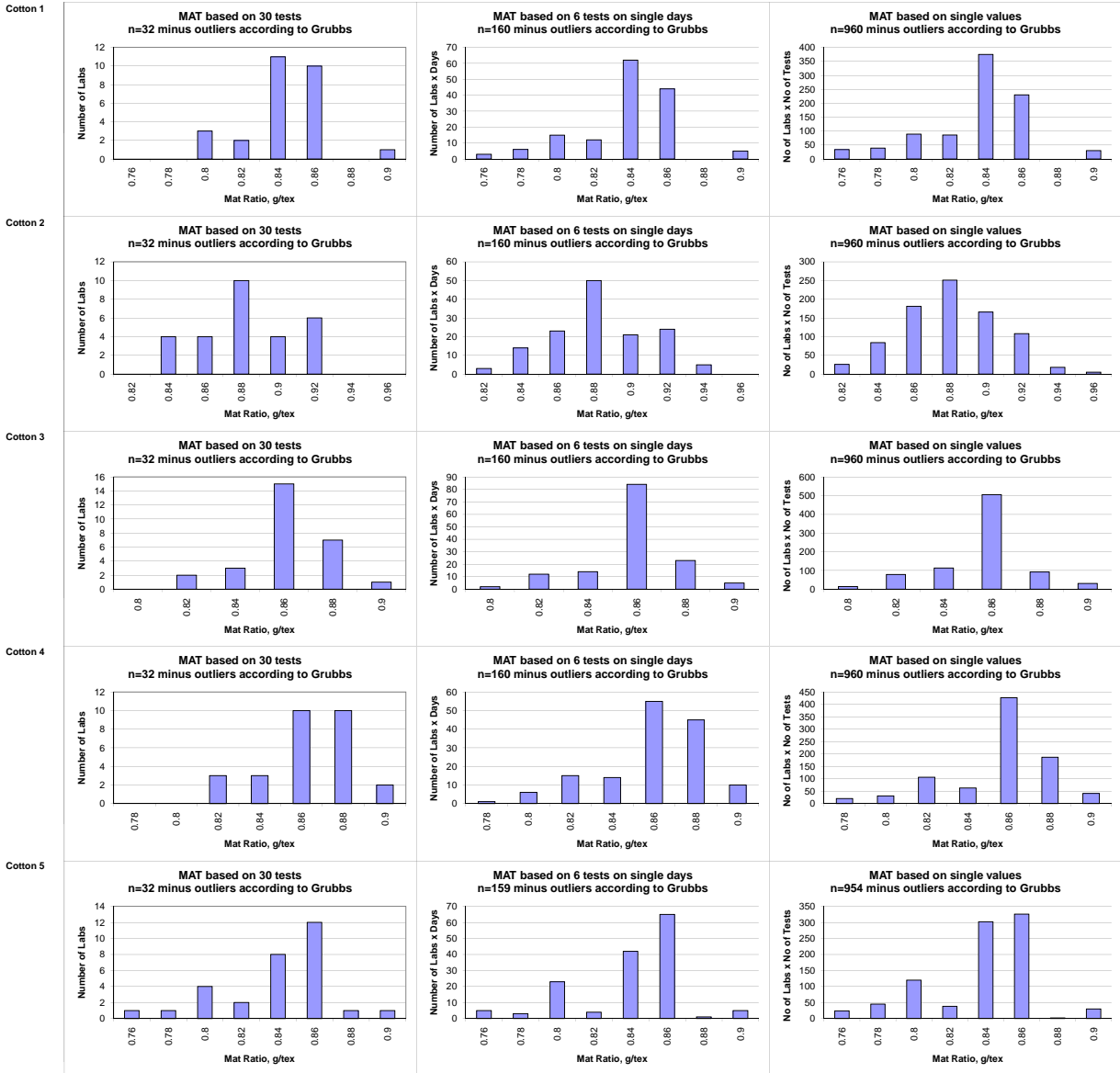
SFI								
			Cotton 1	Cotton 2	Cotton 3	Cotton 4	Average	Cotton 5
Average of Laboratories (Grubbs)			13.685	7.548	7.206	7.247		15.979
Number Of Laboratories			39	39	39	39	39	39
Interlab. Variation	based on 30 tests	SD	2.134	1.427	1.348	1.481	1.597	2.327
		CV %	15.6	18.9	18.7	20.4	18.4	14.6
	based on 6 tests	SD	2.059	1.221	1.264	1.452	1.499	2.367
		CV %	15.0	16.2	17.5	20.0	17.2	14.8
	based on single tests	SD	2.218	1.277	1.324	1.441	1.565	2.527
		CV %	16.2	16.9	18.4	19.9	17.8	15.8
Typical In-Lab. Variation (Median)	between different days with each 6 tests	SD	0.398	0.217	0.209	0.177	0.250	0.420
		CV %	2.9	2.9	2.9	2.4	2.8	2.6
	between single tests on one day	SD	0.628	0.424	0.318	0.322	0.423	0.752
		CV %	4.6	5.6	4.4	4.4	4.8	4.7
	between all tests on different days	SD	0.813	0.463	0.389	0.364	0.507	0.871
		CV %	5.9	6.1	5.4	5.0	5.6	5.5

Maturity (MAT)								
			Cotton 1	Cotton 2	Cotton 3	Cotton 4	Average	Cotton 5
Average of Laboratories (Grubbs)			0.844	0.885	0.860	0.864		0.842
Number Of Laboratories			32	32	32	32	32	32
Interlab. Variation	based on 30 tests	SD	0.022	0.026	0.019	0.021	0.022	0.030
		CV %	2.6	3.0	2.2	2.4	2.5	3.6
	based on 6 tests	SD	0.027	0.026	0.019	0.024	0.024	0.030
		CV %	3.2	3.0	2.2	2.8	2.8	3.5
	based on single tests	SD	0.027	0.027	0.018	0.025	0.024	0.029
		CV %	3.2	3.0	2.1	2.8	2.8	3.4
Typical In-Lab. Variation (Median)	between different days with each 6 tests	SD	0.002	0.002	0.002	0.002	0.002	0.002
		CV %	0.3	0.3	0.3	0.2	0.3	0.3
	between single tests on one day	SD	0.004	0.004	0.003	0.004	0.004	0.004
		CV %	0.5	0.4	0.4	0.5	0.5	0.5
	between all tests on different days	SD	0.005	0.005	0.004	0.005	0.005	0.005
		CV %	0.6	0.6	0.5	0.6	0.6	0.6



(Only results from instruments/days/single tests that are not regarded as outliers according to Grubbs' method)

GL 2009-4 General Evaluation for Optional Parameters
 Test Result Distributions
 Maturity



(Only results from instruments/days/single tests that are not regarded as outliers according to Grubbs' method)